

Knowledge Bites

Wednesday July 19
12:00-12:45 p.m.
Zoom
with our RPC's

Learn while you lunch!

Webinar: MERP Energy Assessment Applications

The much awaited MERP energy assessment applications are available. Review the different assessment levels and go through the applications step by step.



Municipal Energy Resilience Program

Mini Grants



Michael McConnell - mgm@windhamregional.org

Margo Ghia - mghia@windhamregional.org

Program Overview

Act 172 (MERP): 4 Part Program

- ▶ Mini Grants: 4k
- ▶ Energy Assessments: Free to towns
- ▶ Implementation Grant: up to 500k
- ▶ Loan Program

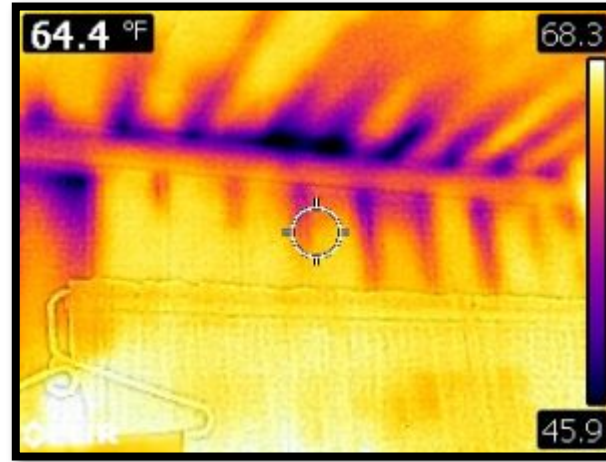


Mini Grants

- ▶ Up to \$4,000 for a variety of energy related projects
 - ▶ Application
 - ▶ Grant Award
 - ▶ Get the grant money!
 - ▶ Report to State July '24
- ▶ Application available online through Buildings and General Services website
<https://bgs.vermont.gov/municipal-energy-resilience-program>
- ▶ Apply soon!

Mini Grant Uses

- ▶ ADA Assessment Consultant
- ▶ Energy Fair
- ▶ Establish an Energy Committee
- ▶ Printing and other peripheral costs associated with town energy programs
- ▶ Any other effort to promote community energy resilience or establish a municipal energy resilience plan.



Free Building Energy Assessments

MUNICIPAL ENERGY RESILIENCE PROGRAM

A solid green horizontal bar spanning the width of the slide at the bottom.

What is MERP?

- ❖ Act 172 of 2022 created the Municipal Energy Resilience Program (MERP) and allocated \$45 million to the program.
- ❖ MERP will provide funding and technical assistance to municipalities to increase their energy resilience, reduce energy use, and curb greenhouse gas emissions by promoting renewable energy, weatherization, fuel switching, thermal improvements, and enhance building comfort.
- ❖ Municipalities with a high energy burden, as defined by Efficiency VT's Energy Burden Report, will be prioritized.
- ❖ Eligibility:
 - ❖ Cities, towns, incorporated villages, fire districts, and all other governmental incorporated units except for school districts.

Program Components

- ❖ Community Capacity Mini-Grants – available now!
- ❖ **Free Energy Assessments – available now!**
- ❖ Implementation Grants

Free Energy Assessments

- Conducted by BGS contractors
- Application coming soon!
- Two levels available (both levels qualify a town for an implementation grant).
 - Level 1: 0.5 – 1.5 hours in duration. High level overview of building systems. No building information required.
 - Level 2: Approx. 4 hours in duration. Building documents required. May qualify the town for additional loans/grants.

**Buildings must be municipally-owned or have a long-term/perpetual lease by a municipality to be eligible*

No reporting
requirements!

All billing takes place
between BGS and the
contractors!

Level 2 Assessment Information

❖ Required Documents

- ❖ 3 years of electricity and fuel use data (12 consecutive months minimum)
- ❖ Mechanical and electrical plans/drawings
- ❖ Architectural drawings
- ❖ Lighting schedules

Utility and fuel use data are the most important information! Even if you don't have all the required information, you can still apply for a level 2!

Application Process

- The application is available on the BGS MERP homepage: <https://bgs.vermont.gov/municipal-energy-resilience-program>
- The application allows you to apply for an assessment for up to 5 municipal buildings.
- Once you have submitted your application, you will be emailed a link to upload the required documents (if applying for a level 2) into an online SharePoint folder – your RPC is available to help with this!
- If you have a previous energy audit report (completed within the last 5 years) for a building, you can also upload it to the folder (there is also a place on the application form to note if the building has had a previous audit).

Recommendations

- ❖ The application does not save! Please fill it out completely and submit before closing out of the window.
- ❖ Check to make sure you receive a confirmation email upon submission.
- ❖ The person most knowledgeable about each building with keys/access to mechanical rooms must be present for these building assessments. The contractors may also interview this person about HVAC systems and the building during the assessments. Your key building person cannot be late or absent for the scheduled assessment or the assessment won't be completed.
- ❖ Reach out to your regional planning commission! RPCs have received funding from BGS to provide technical assistance to municipalities. We can help brainstorm ideas, assist with applications and answer questions!
- ❖ Sign up for the MERP email list to be notified of the latest updates (scroll down to the bottom of the [MERP webpage](#)).



Bennington County Regional Commission

Callie Fishburn

cfishburn@bcrcvt.org

802-442-0713 x309

Windham Regional Commission

Margo Ghia

mghia@windhamregional.org

802-257-4547 x116

Mike McConnell

mgm@windhamregional.org

802-257-4547 x110

